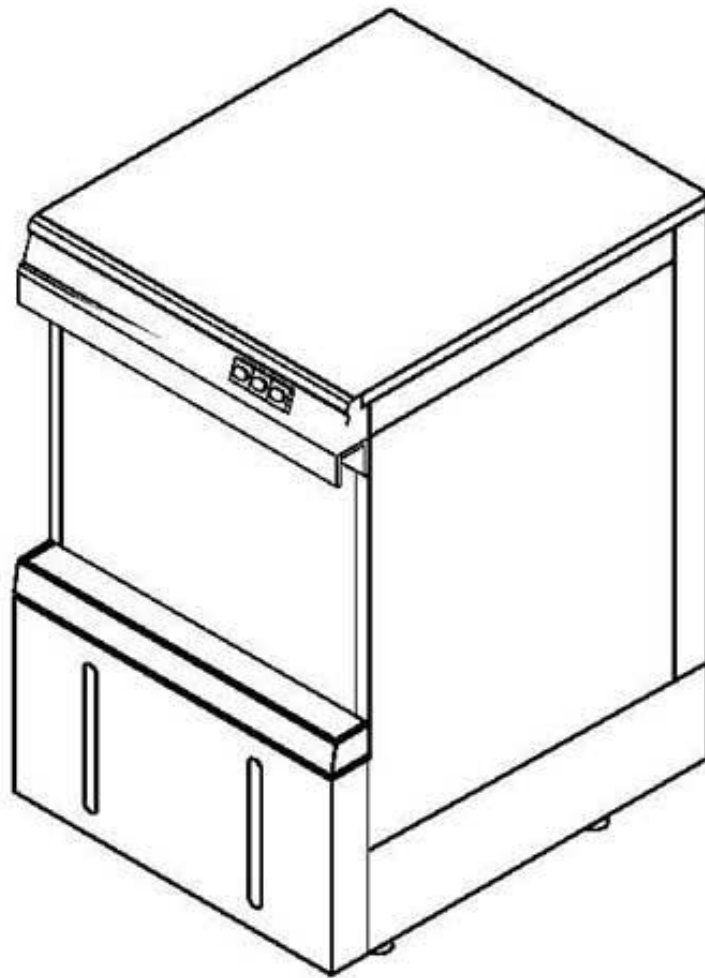


winterhalter

Spare parts list GS 23S



Drawn up: 07/93

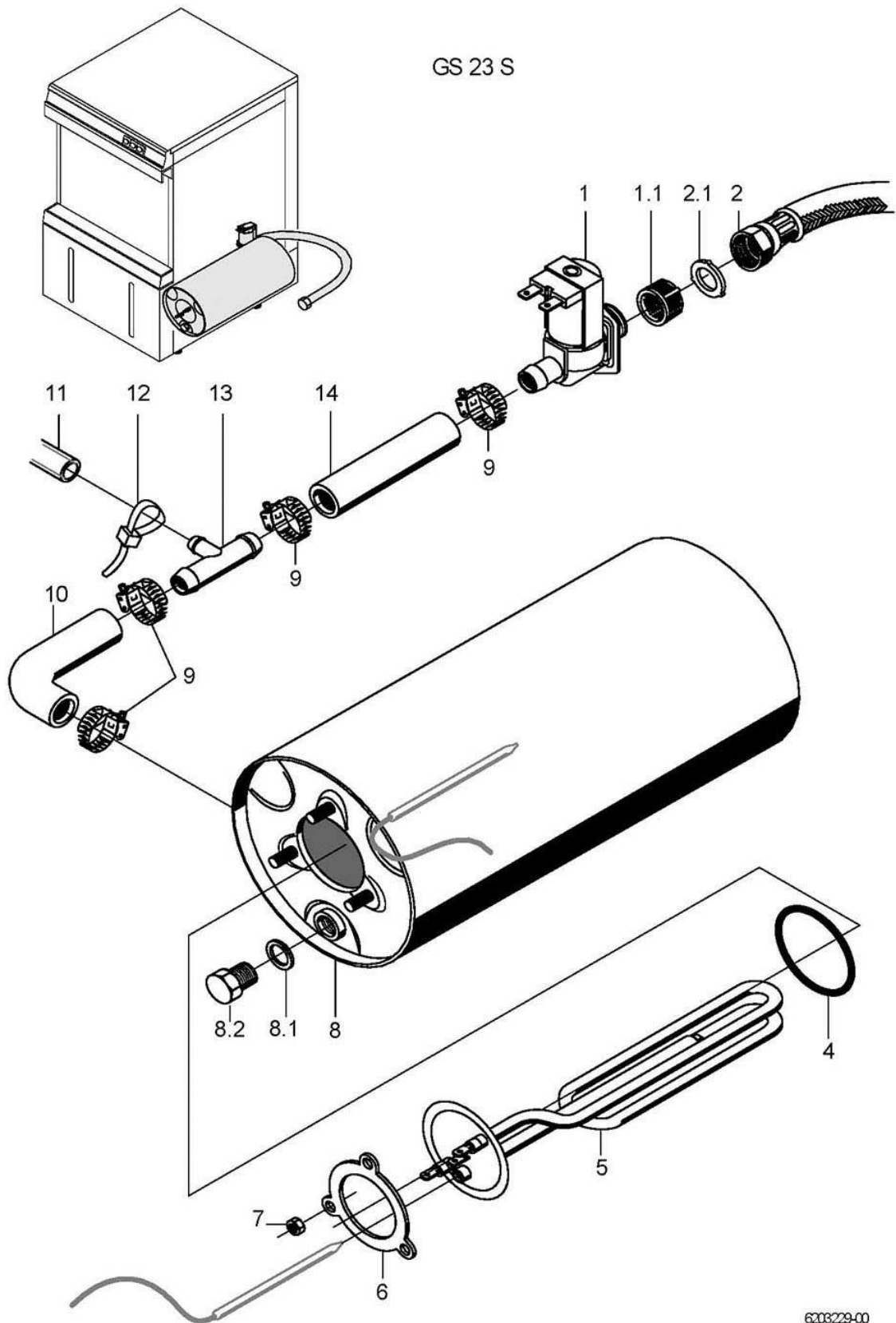
Processed: 12.02.09

Parts no.: 89002347

Contents

Water inlet	to machine no.: 5775	Page	1 - 2
Water inlet	From machine no.: 5776	Page	3 - 4
Water drainage and tank heating		Page	5 - 6
Wash pump		Page	7 - 8
Wash system, bottom		Page	9 - 10
Rinse system	to machine no.: 5775	Page	11 - 12
Rinse system	From machine no.: 5776	Page	13 - 14
Dosage	to machine no.: 5775	Page	15 - 16
Dosage	From machine no.: 5776	Page	17 - 18
Chassis, container and panelling	to machine no.: 5775	Page	19 - 20
Chassis, container and panelling	From machine no.: 5776	Page	21 - 22
Door		Page	23 - 24
Electrical parts I		Page	25 - 26
Electrical parts II	to machine no.: 5775	Page	27 - 28
Electrical parts II	From machine no.: 5776	Page	29 - 30
Drain pump (optional)		Page	31 - 32

GS 23 S



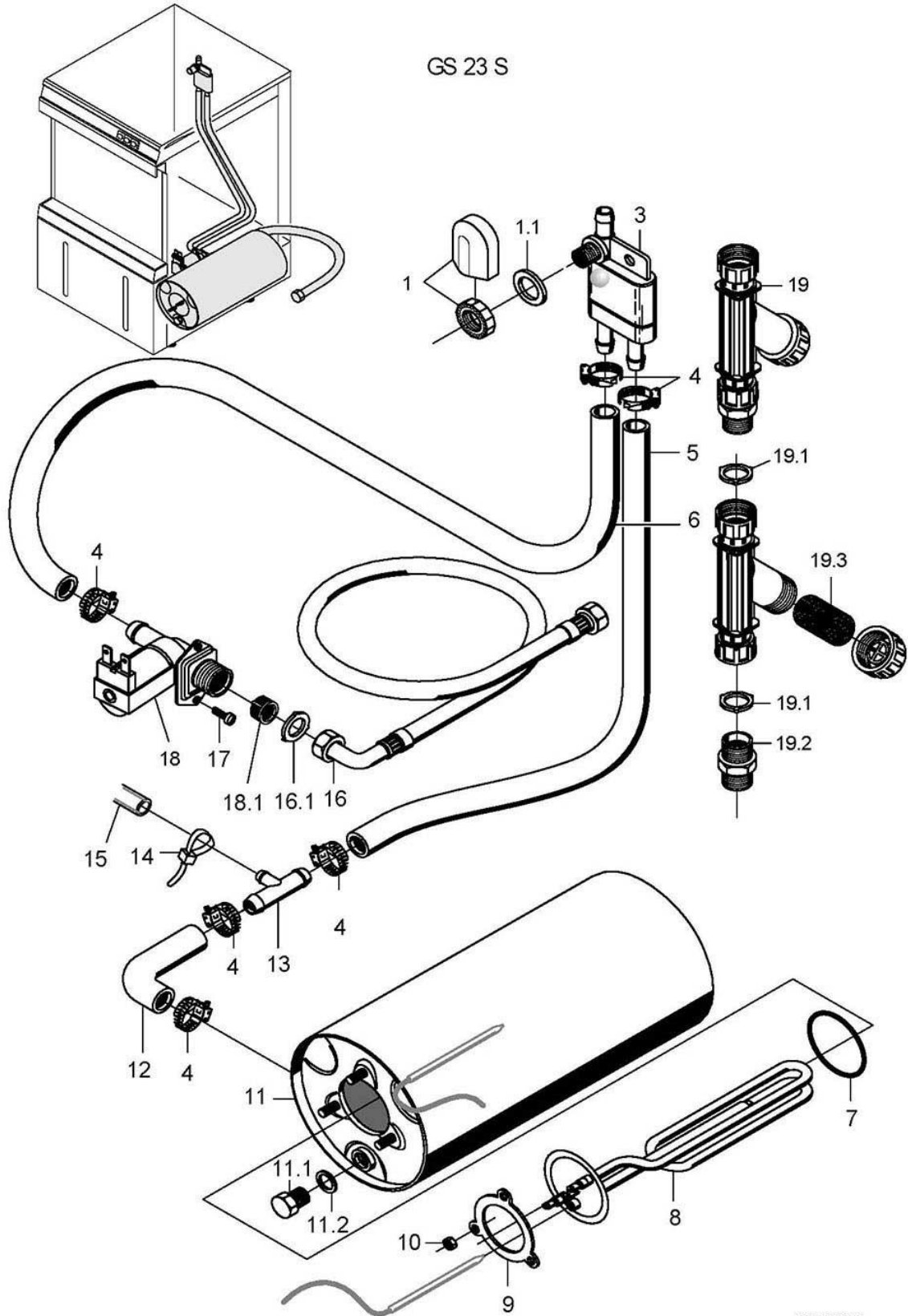
6203229-00

GS 23S

Water inlet to machine no.: 5775

Item.	Designation	Parts no.:	Pc.	Notes
1	Solenoid valve flow restrictor 15l; 220-240V/50-60HZ	31 06 180		incl. item 1.1
1.1	Solenoid valve filter	31 06 186		
2	Metal hose; DN13 X 2000; G3/4"	29 01 321		incl. item 2.1
2.1	Gasket; D16 X D24 X 3,0	80002241	2	
4	O-ring; 43 X 7,0	27 07 088		
5	Heating element cranked 2,8kW; 230V/1	31 03 084		
5	Heating element cranked 2,6kW; 240V/1	31 03 111		
6	Locking washer; D43 X D80 X 4,0	01 17 003		
7	Hexagonal nut; M5	21 01 303		
8	Set boiler	62002477		incl. item 8.1 - 8.2
8.1	Gasket; D10 X D18 X 1,5	27 03 003		
8.2	Hexagon screw; M10 X 16; A70	20 01 352		
9	Hose clamp; D12-22 X 9	28 02 105		
10	Hose elbow 90°; DN13X4,5;42X47	40 03 001		
11	Hose; DN5 X 1,5	40 01 024		285mm; "By-the-metre" goods
12	Cable tie; 100 X 2,5	31 20 175		
13	T-piece; D6,6 X D14 X D14	35 01 086		
14	Industrial hose; DN13 X 3,5	40 02 035		260mm; "By-the-metre" goods

GS 23 S

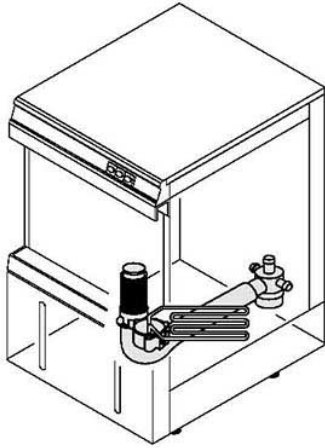


6203230.00

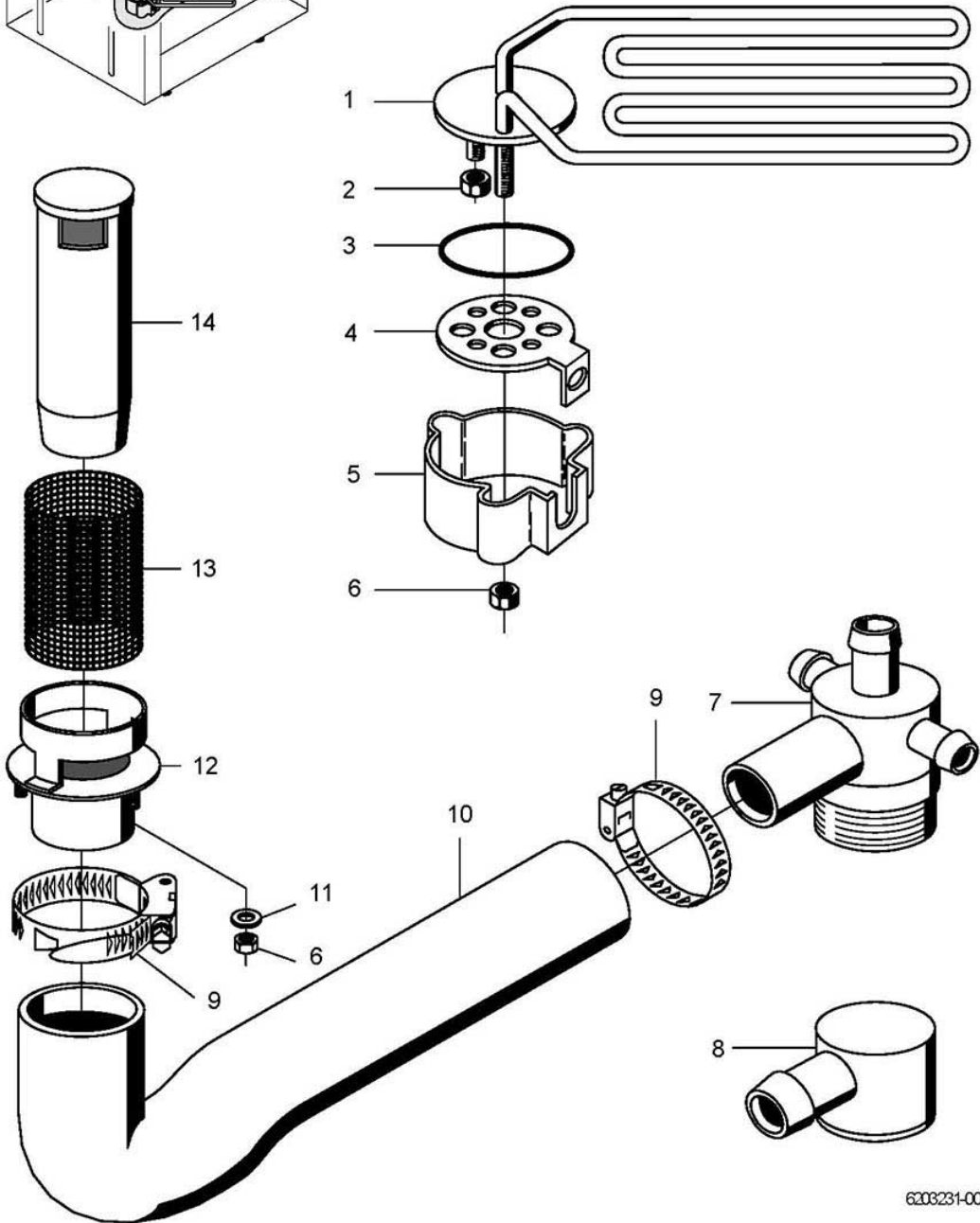
GS 23S

Water inlet From machine no.: 5776

Item.	Designation	Parts no.:	Pc.	Notes
1	Tank inlet set	61004545		incl. item 1.1
1.1	Gasket; D17 X D24 X 2,0	62001366		
3	Lateral check valve	35 01 194		
4	Hose clamp; D12-22 X 9	28 02 105		
5	Hose elbow; DN12,5 X 4,0	40 03 051		
6	Industrial hose; DN13 X 3,5	40 02 035		650 mm; "By-the-metre" goods
7	O-ring; 43 X 7,0	27 07 088		
8	Heating element cranked 2,8kW; 230V/1	31 03 084		
8	Heating element cranked 2,6kW; 240V/1	31 03 111		
9	Locking washer; D43 X D80 X 4,0	01 17 003		
10	Hexagonal nut; M5	21 01 303		
11	Set boiler	62002477		incl. item 11.1 - 11.2
11.1	Hexagon screw; M10 X 16; A70	20 01 352		
11.2	Gasket; D10 X D18 X 1,5	27 03 003		
12	Hose elbow; DN13,5 X 3,5	62001573		
13	T-piece; D6,6 X D14 X D14	35 01 086		
14	Cable tie; 100 X 2,5	31 20 175		
15	Hose; DN5 X 1,5	40 01 024		285mm; "By-the-metre" goods
16	Metal hose; DN13 X 2000; G3/4"	29 01 321		incl. item 16.1
16.1	Gasket; D16 X D24 X 3,0	80002241	2	
17	Countersunk screw; M4 X 8	20 10 309		
18	Solenoid valve flow restrictor 15l; 220-240V/50-60HZ	31 06 180		incl. item 18.1
18.1	Solenoid valve filter	31 06 186		
19	Dirt trap; 150 µM	80002153		incl. item 19.1 – 19.3
19.1	Gasket; D16 X D24 X 3,0	80002241	2	
19.2	Double nipple; G 3/4" X 40; SW30	80002167		
19.3	Strainer; D27 X 67 X 150µM	80002728		



GS 23 S

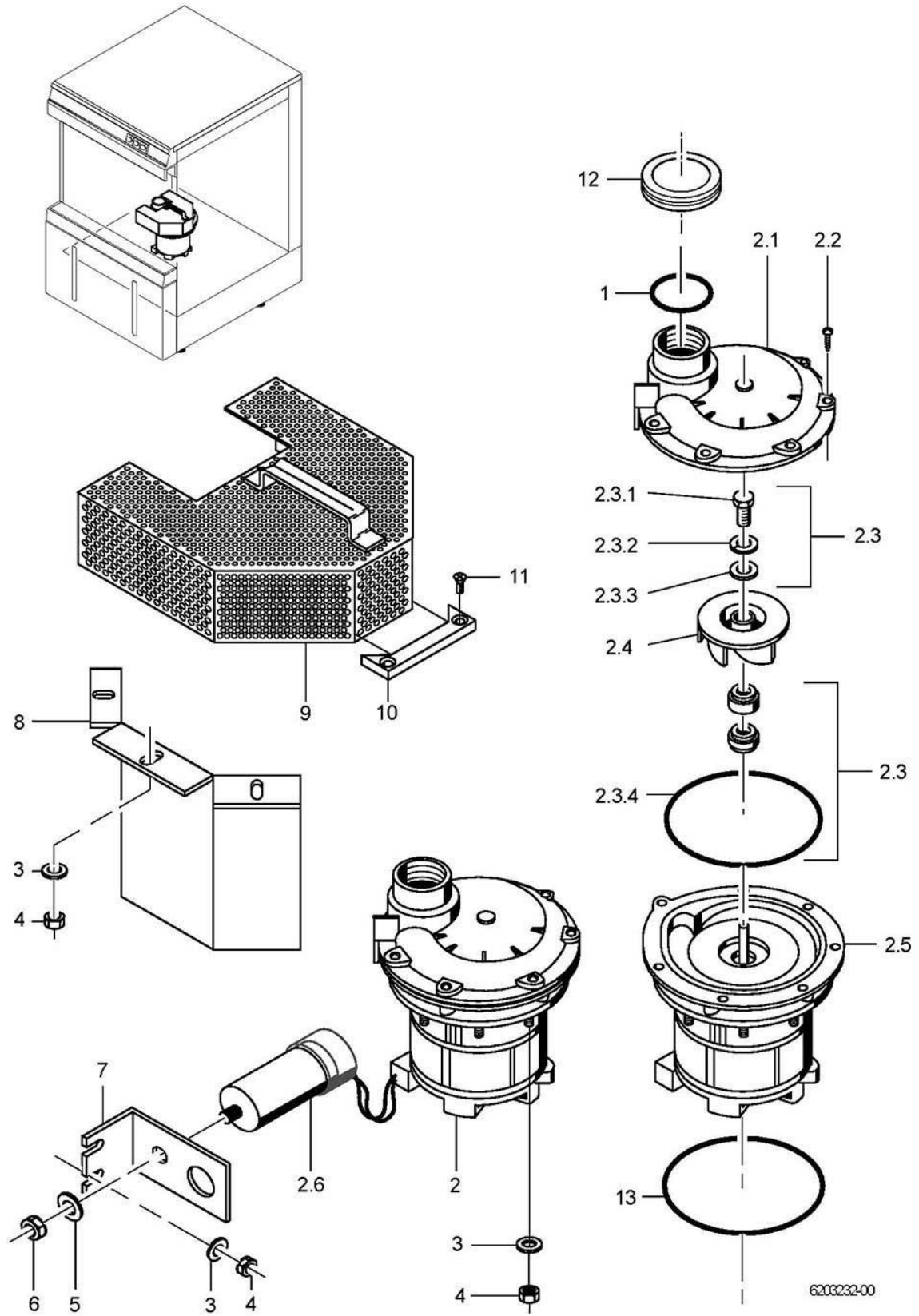


6203231-00

GS 23S

Water drainage and tank heating

Item.	Designation	Parts no.:	Pc.	Notes
1	Heating element 2,8kw, 230V/1	31 03 062		
1	Heating element 2,6kW; 240V/1	31 03 053		
2	Hexagonal nut; M5	21 01 303		
3	O-ring; 43 X 7,0	27 07 088		
4	Heating element flange; 1,5 X 62 X 113,5; D20	31 03 067		
5	Element cover; 50 X D67 X 89,5	31 03 014		
6	Hexagonal nut; M5 SELBSTSICHERND	21 05 302		
7	Mediamat drain; G 1 1/2"; D40	35 01 080		From machine no.: 5776
8	Drain angle; 70 X 86	35 01 208		to machine no.: 5775
9	Hose clamp; D32-52 X 12	28 02 110		
10	Reducing elbow; DN24 X DN36	40 03 033		to machine no.: 5775
10	Reducing elbow; DN37 X DN40	40 03 022		From machine no.: 5776
11	Washer; D5,3 X D10 X 1,0	22 01 300		
12	Stand pipe bottom part	55 28 559		
13	Strainer for stand pipe; D59 X D54 X 185	29 04 229		adapt
14	Stand pipe; ÜBERLAUFHÖHE 80	29 04 231		



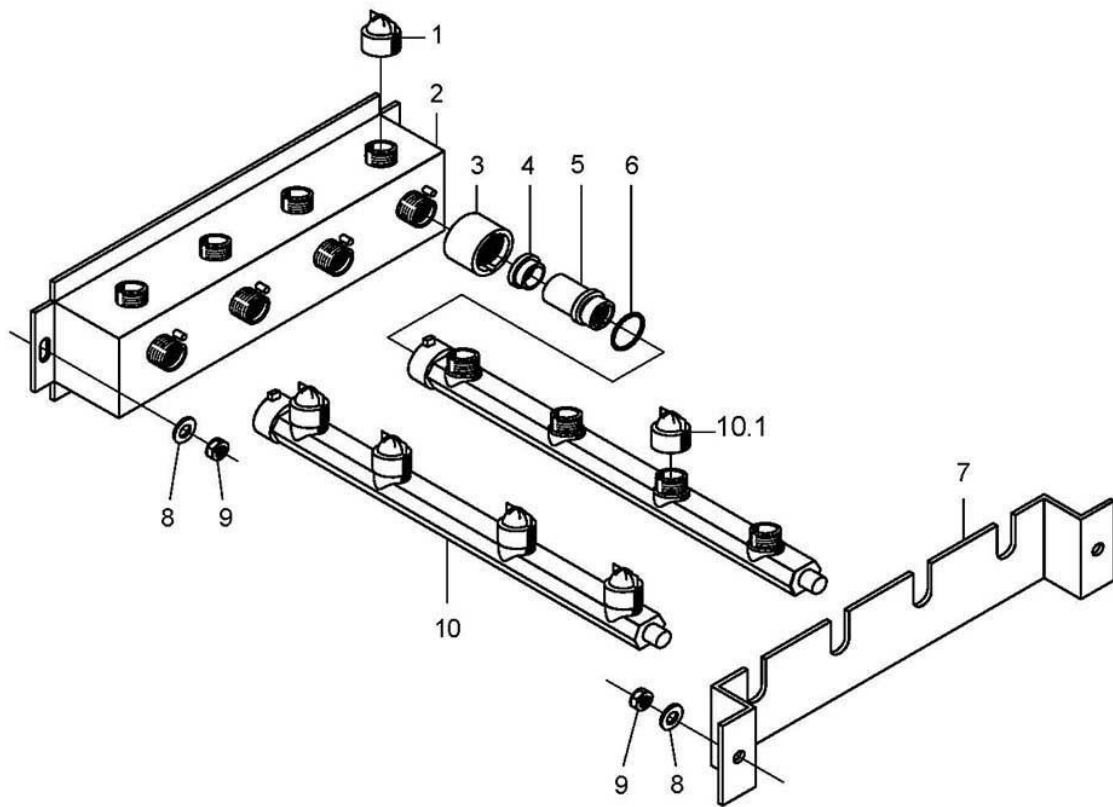
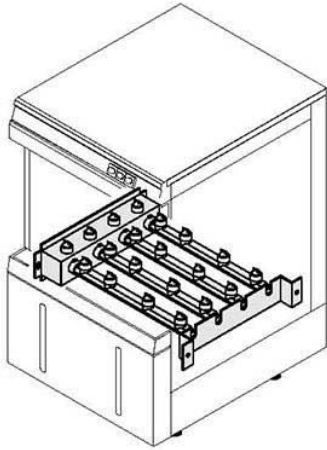
6203232-00

GS 23S

Wash pump

Item.	Designation	Parts no.:	Pc.	Notes
1	O-ring; 43 X 7,0	27 07 088		
2	Pump 0,24kW; 230V/1/50HZ	31 02 332		incl. item 2.1 - 2.6
2	Pump 0,24kW; 220V/1/60HZ	31 02 069		incl. item 2.1 - 2.6
2.1	Pump housing	31 02 215		
2.2	Sheet metal screw; ST 4,2 X 16	20 20 303		
2.3	Sealing kit; 0,24 KW	80002674		incl. item 2.3.1 - 2.3.4
2.3.1	Lens head screw; M5 X 12 LH	20 18 301		Left-hand thread
2.3.2	Spring washer; B5	23 03 302		
2.3.3	Washer; D5,3 X D12 X 0,8	22 02 313		
2.3.4	O-ring; 148,82 X 3,53	31 02 216		
2.4	Impeller; D86	31 02 217		50 Hz
2.4	Impeller; D75; 0,4KW; 60HZ	55 14 033		60 Hz
2.5	Pump cover	31 02 228		without motor
2.6	Capacitor; 12,5 MIKRO F	31 13 028		
3	Washer; D5,3 X D10 X 1,0	22 01 300		
4	Hexagonal nut; M5 SELBSTSICHERND	21 05 302		
5	Washer; D8,4 X D17 X 1,6	22 01 303		
6	Hexagonal nut; M8	21 01 305		
7	Level switch bracket; 1,5 X 40 X 107	62000193		
8	Splash guard; 0,8 X 130 X 150	62001421		
9	Pump sieve	62002246		to machine no.: 5775 ; adapt
10	Centering piece	62002004		to machine no.: 5775
11	Thread cap; M4 X D12; 13,5 LG	28 14 331		
12	Sleeve; D44 X D58 X 10	40 07 030		
13	O-ring; 155 X 5	27 07 024		

GS 23 S



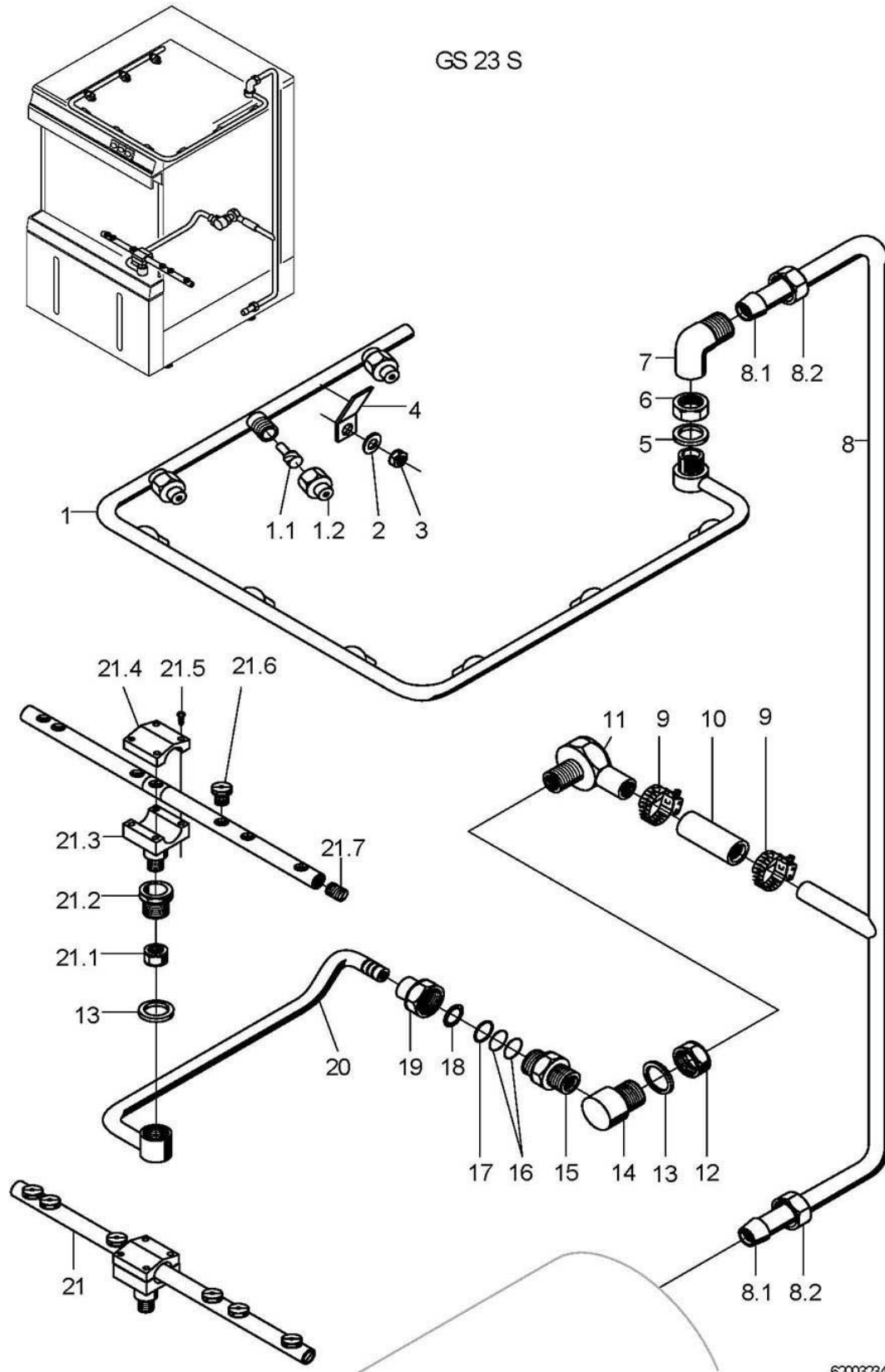
62003233-00

GS 23S

Wash system, bottom

Item.	Designation	Parts no.:	Pc.	Notes
1	Cross recession jet; G 3/4"	62001405	4	
2	Wash manifold	62002008		
3	Locking ring; D49 X 28	61002023	4	
4	Throttle; D10 X D24 X 11	62001496	4	to machine no.: 5811
5	Locking nut; D38 X 28; G 3/4"	61004059	4	
6	O-ring; 28 X 2,5	27 07 049		
7	Support; 2,0 X 40 X 424	62003298		
8	Spring washer; B5	23 03 302		
9	Hexagonal nut; M5	21 01 303		
10	Wash arm cpl.; 4 DÜSEN; 354 LG	62002829		incl. item 10.1
10.1	Cross recession jet; G 3/4"	62001405	4	

GS 23 S



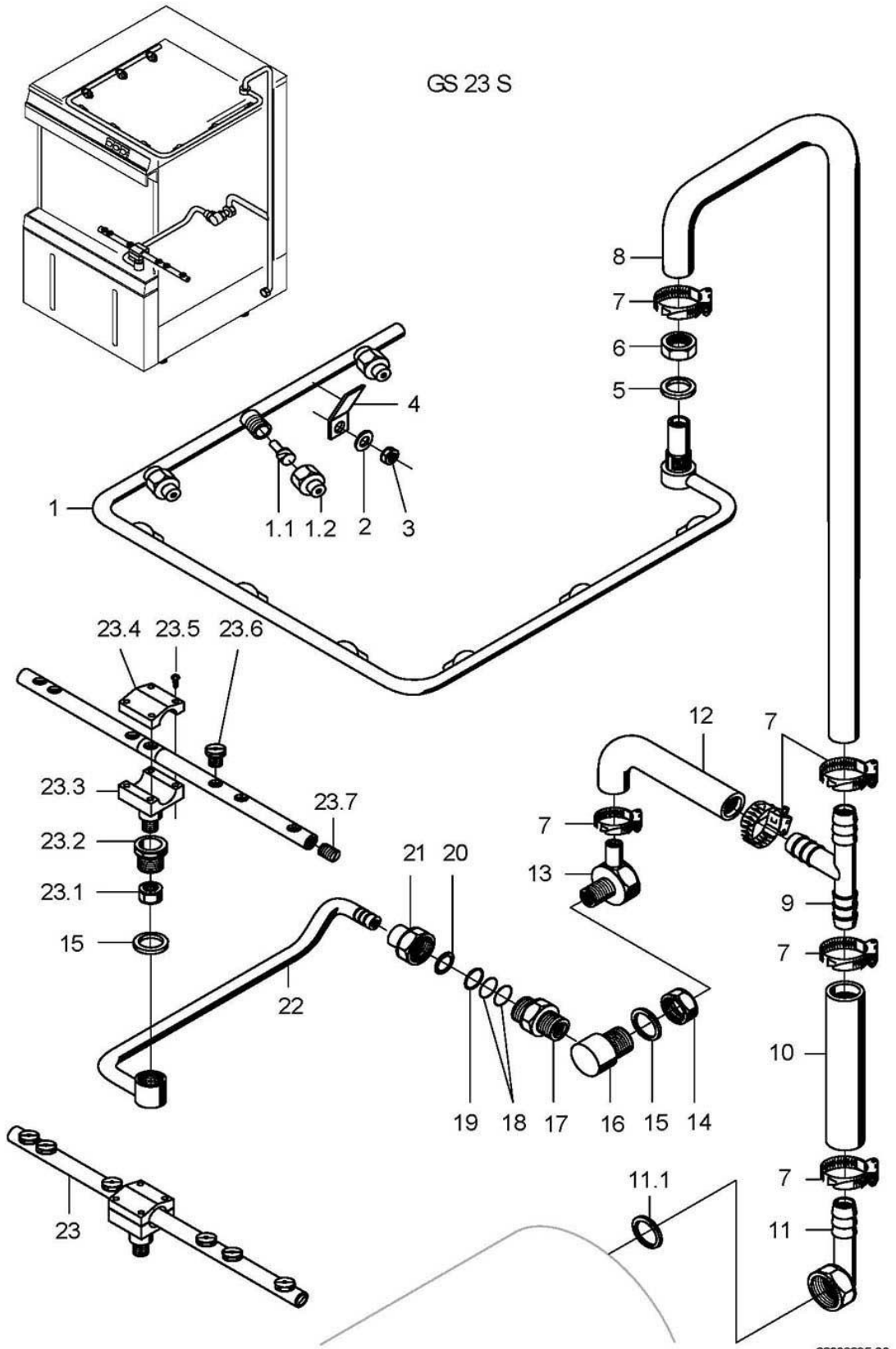
6200323400

GS 23S

Rinse system to machine no.: 5775

Item.	Designation	Parts no.:	Pc.	Notes
1	Rinse pipe top cpl.	62002009		incl. item 1.1 - 1.2
1.1	Spray jet swirl; D8 X 18,8	65002764	9	
1.2	Spray jet cap; D14,6 X 21	65002765	9	
2	Spring washer; B5	23 03 302		
3	Hexagonal nut; M5	21 01 303		
4	Fixing angle; 1,0 X 20 X 32	62000276		
5	Gasket; D17 X D24 X 2,0	27 09 009		
6	Hexagonal nut; G 3/8" X 5,5; SW22	30 09 200		
7	Angle screwing; R1/2" X G3/4"	62002010		
8	Rinse manifold	62002012		incl. item 8.1 - 8.2
9	Hose clamp; D12-22 X 9	28 02 105		
10	Industrial hose; DN13 X 3,5	40 02 035		155 mm; "By-the-metre" goods
11	Angle screwing; M14 X D12	62002011		
12	Hexagonal nut; G 1/2" X 5,0; SW27	30 09 212		
13	Gasket; D21 X D28 X 2,0	27 09 011		
14	Rinse connection cpl.; D35 X 38 X G1/2"	62001780		
15	Double nipple; G 3/8" X 26; SW17	62001484		
16	O-ring; 8 X 1,0	27 07 048	2	
17	O-ring; 7 X 2,5	27 07 013		
18	Washer; D12 X D14,7 X 1,5	62001658		
19	Coupling nut; G 3/8"; SW22	62001485		
20	Revolving arm support	62001778		
21	Revolving arm	62001158		incl. item 21.1 - 21.7
21.1	Hexagonal nut; M10 X 1,0 X 5,0; SW14	62001401		
21.2	Revolving arm bearing; G 1/2" X 17,3	62001486		
21.3	Revolving arm bottom part	62001159		
21.4	Revolving arm upper part	62001160		
21.5	Sheet metal screw; ST 2,9 X 13	20 20 302		
21.6	Flat jet nozzle; 1/16 NPT; SW10	29 10 312	6	
21.7	Threaded stud; M9 X 6	29 10 238	2	

GS 23 S



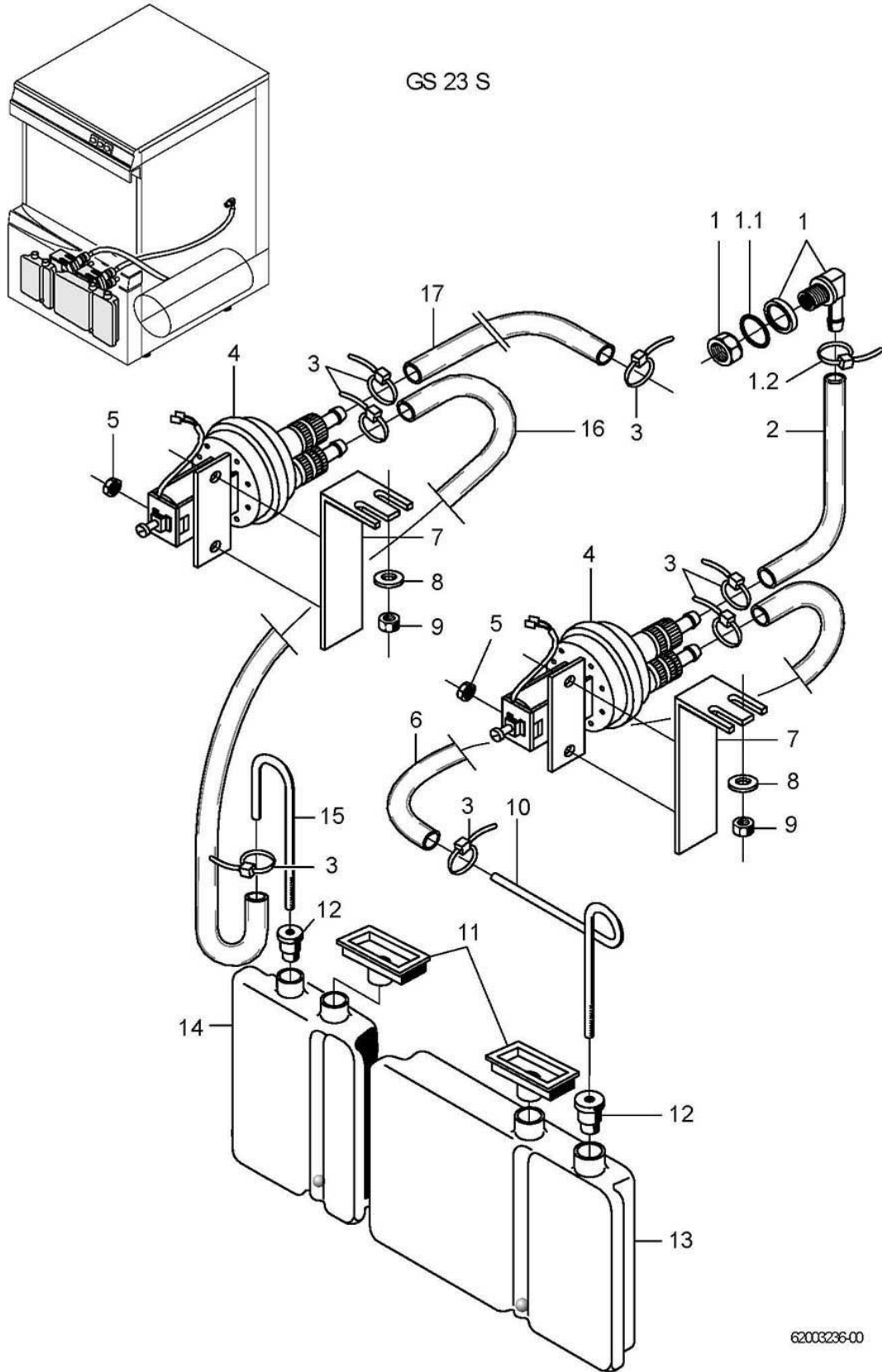
62003235-00

GS 23S

Rinse system From machine no.: 5776

Item.	Designation	Parts no.:	Pc.	Notes
1	Rinse pipe top cpl.	62002465		incl. item 1.1 - 1.2
1.1	Spray jet swirl; D8 X 18,8	65002764	9	
1.2	Spray jet cap; D14,6 X 21	65002765	9	
2	Washer; D5,3 X D10 X 1,0	22 01 300		
3	Hexagonal nut; M5	21 01 303		
4	Fixing angle; 1,0 X 20 X 32	62000276	3	
5	Gasket; D17 X D24 X 2,0	27 09 009		
6	Hexagonal nut; G 3/8" X 5,5; SW22	30 09 200		
7	Hose clamp; D12-22 X 9	28 02 105		
8	Hose bend; DN12,5 X 4,0	40 03 050		adapt
9	Hose T-connecting piece; D15 X D15 X D15	70010598		
10	Hose bend; DN12,5 X 4,0	40 03 050		adapt
11	Hose nipple, angled; D18	60002474		incl. item 11.1
11.1	Gasket; D16 X D24 X 3,0	80002241		
12	Hose elbow; DN13,5 X 3,5	62001573		adapt
13	Angle screwing; M14 X D12	62002011		
14	Hexagonal nut; G 1/2" X 5,0; SW27	30 09 212		
15	Gasket; D21 X D28 X 2,0	27 09 011		
16	Rinse connection cpl.; D35 X 38 X G1/2"	62001780		
17	Double nipple; G 3/8" X 26; SW17	62001484		
18	O-ring; 8 X 1,0	27 07 048	2	
19	O-ring; 7 X 2,5	27 07 013		
20	Washer; D12 X D14,7 X 1,5	62001658		
21	Coupling nut; G 3/8"; SW22	62001485		
22	Revolving arm support	62001778		
23	Revolving arm	62001158		incl. item 23.1 - 23.7
23.1	Hexagonal nut; M10 X 1,0 X 5,0; SW14	62001401		
23.2	Revolving arm bearing; G 1/2" X 17,3	62001486		
23.3	Revolving arm bottom part	62001159		
23.4	Revolving arm upper part	62001160		
23.5	Sheet metal screw; ST 2,9 X 13	20 20 302		
23.6	Flat jet nozzle; 1/16 NPT; SW10	29 10 312	6	
23.7	Threaded stud; M9 X 6	29 10 238	2	

GS 23 S



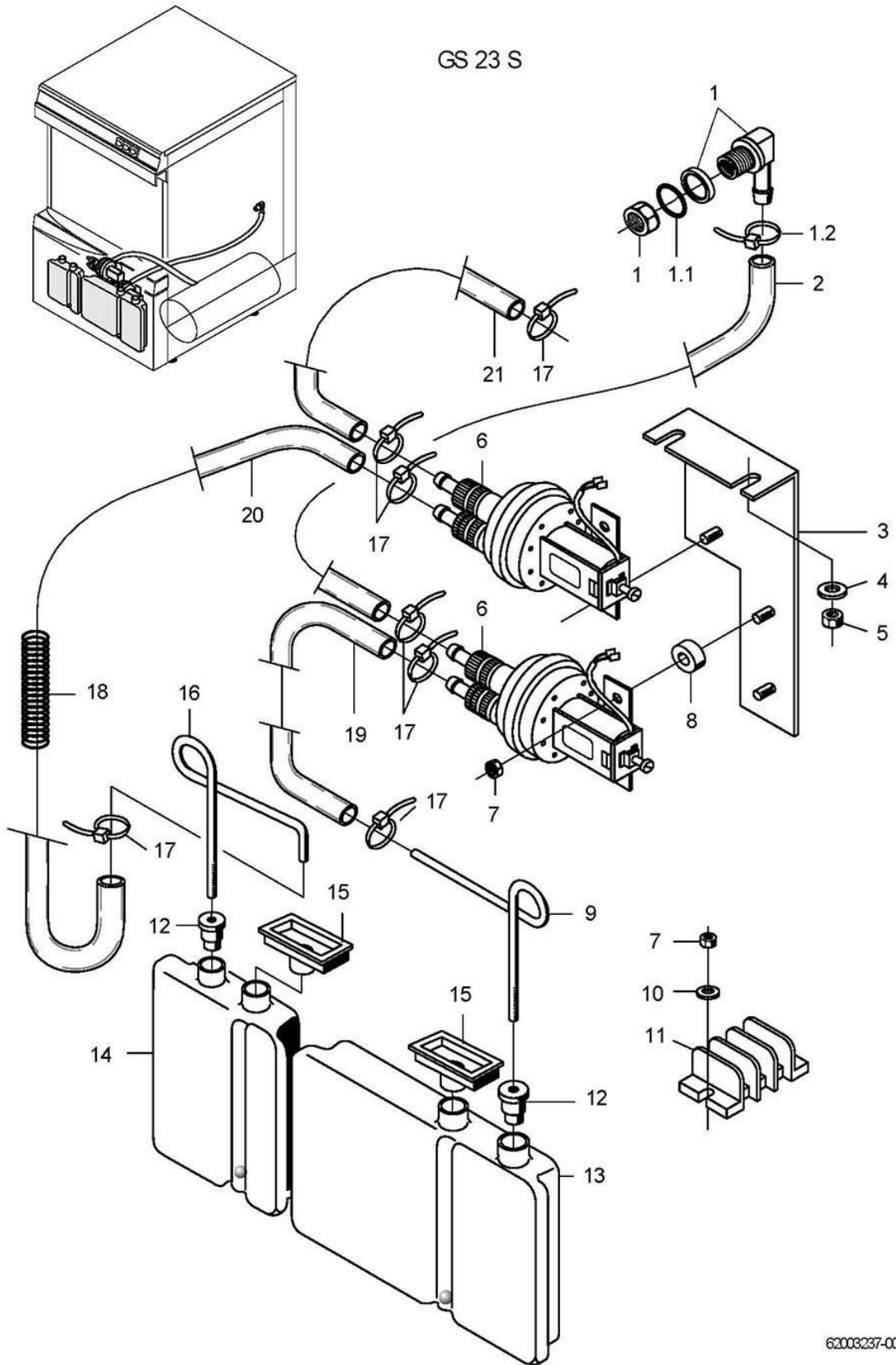
62003236-00

GS 23S

Dosage to machine no.: 5775

Item.	Designation	Parts no.:	Pc.	Notes
1	Detergents dosing nipple set	62002869		incl. item 1.1 - 1.2
1.1	O-ring; 10 X 2,5	27 07 030		
1.1	Gasket; D10 X D18 X 1,5	27 09 013		replaced by 62002869
1.2	Wire hose clamp; D8,6 X 1	28 02 348		
2	Hose; DN5 X 1,5	40 01 024		420mm; "By-the-metre" goods
3	Cable tie; 100 X 2,5	31 20 175		
4	ELT 10 replacement set	55 28 278	2	
5	Hexagonal nut; M4	21 01 302		
6	Hose; DN5 X 1,5	40 01 024		780mm; "By-the-metre" goods
7	Support for dispenser; 1,5 X 40 X 97	62000192		
8	Washer; D5,3 X D10 X 1,0	22 01 300		
9	Hexagonal nut; M5 SELBSTSICHERND	21 05 302		
10	Detergent suction pipe; D6 X 1,0 X 486	62001300		
11	Filling funnel; 47 X 108 X 2,5; D22	62001331	2	
12	Reducing bush; D30 X 25	40 06 011	2	
13	Detergent container cpl.; 1,8 LITER	62001292		
14	Rinse aid container cpl.; 1,0 LITER	62001304		
15	Rinse aid suction pipe; D6 X 1,0 X 278	62001301		
16	Hose; DN5 X 1,5	40 01 024		680mm; "By-the-metre" goods
17	Hose; DN5 X 1,5	40 01 024		285mm; "By-the-metre" goods

GS 23 S



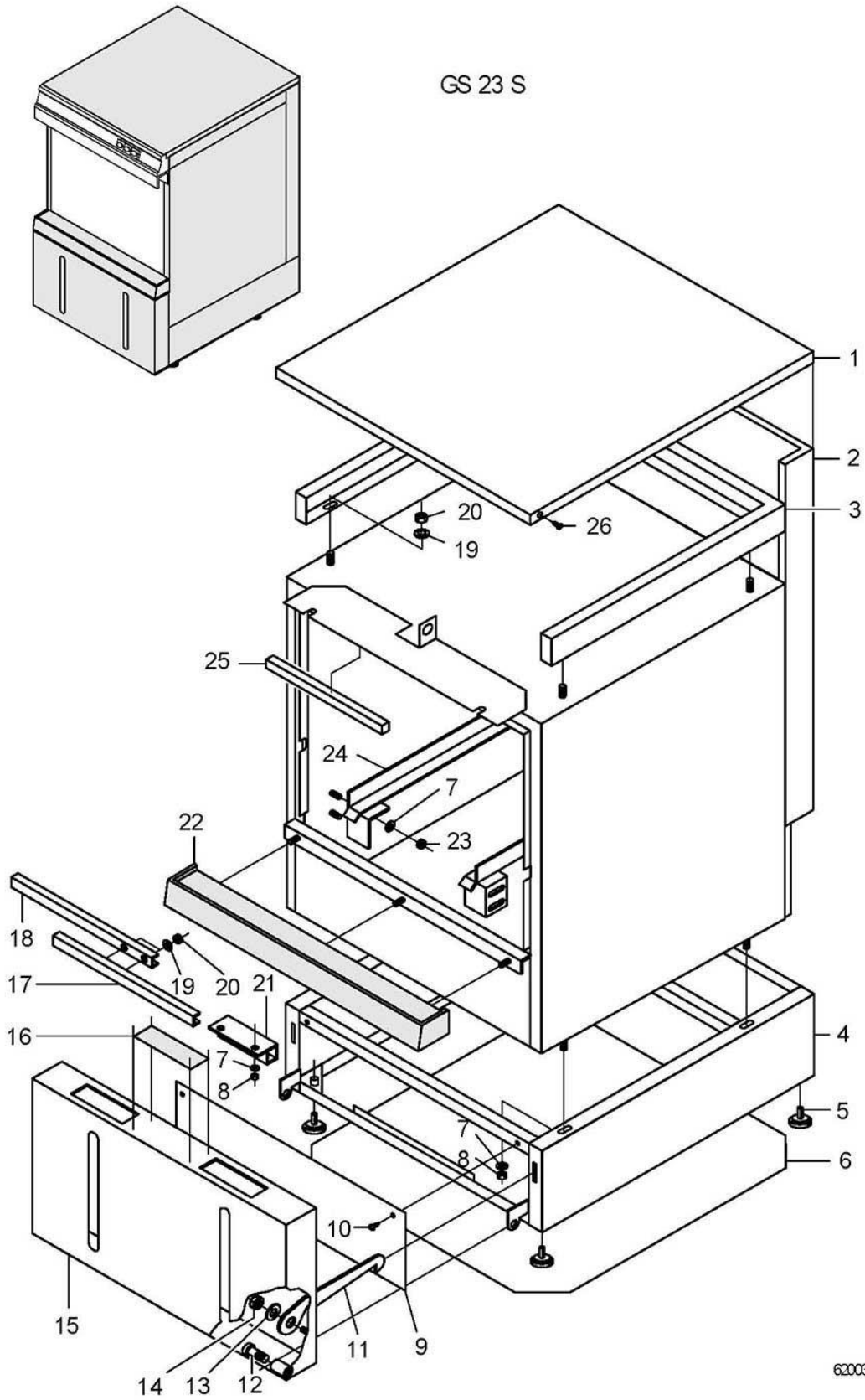
62003237-00

GS 23S

Dosage From machine no.: 5776

Item.	Designation	Parts no.:	Pc.	Notes
1	Detergents dosing nipple set	62002869		incl. item 1.1 - 1.2
1.1	O-ring; 10 X 2,5	27 07 030		
1.1	Gasket; D10 X D18 X 1,5	27 09 013		replaced by 62002869
1.2	Wire hose clamp; D8,6 X 1	28 02 348		
2	Hose; DN5 X 1,5	40 01 024		1000 mm; "By-the-metre" goods
3	Support for dispenser; 1,5 X 70 X 173,5	62002455		
4	Washer; D5,3 X D10 X 1,0	22 01 300		
5	Hexagonal nut; M5 SELBSTSICHERND	21 05 302		
6	ELT 10 replacement set	55 28 278	2	
7	Hexagonal nut; M4 SELBSTSICHERND	21 05 300		
8	Spacer; D5,3 X D12 X 7	22 08 513		
9	Detergent suction pipe; D6 X 1,0 X 486	62001300		
10	Washer; D4,3 X D8 X 0,5	22 02 302		
11	Distribution bar; 3-POLIG	31 09 011		3-pole
12	Reducing bush; D30 X 25	40 06 011		
13	Detergent container cpl.; 1,8 LITER	62001292		
14	Rinse aid container cpl.; 1,0 LITER	62001304		
15	Filling funnel; 47 X 108 X 2,5; D22	62001331		
16	Suction pipe; D6 X 1,0 X 432,5	62002449		
17	Cable tie; 100 X 2,5	31 20 175		
18	Spring; D0,8 X DI10 X 280	62002419		
19	Hose; DN5 X 1,5	40 01 024		570mm; "By-the-metre" goods
20	Hose; DN5 X 1,5	40 01 024		430mm; "By-the-metre" goods
21	Hose; DN5 X 1,5	40 01 024		600 mm; "By-the-metre" goods

GS 23 S



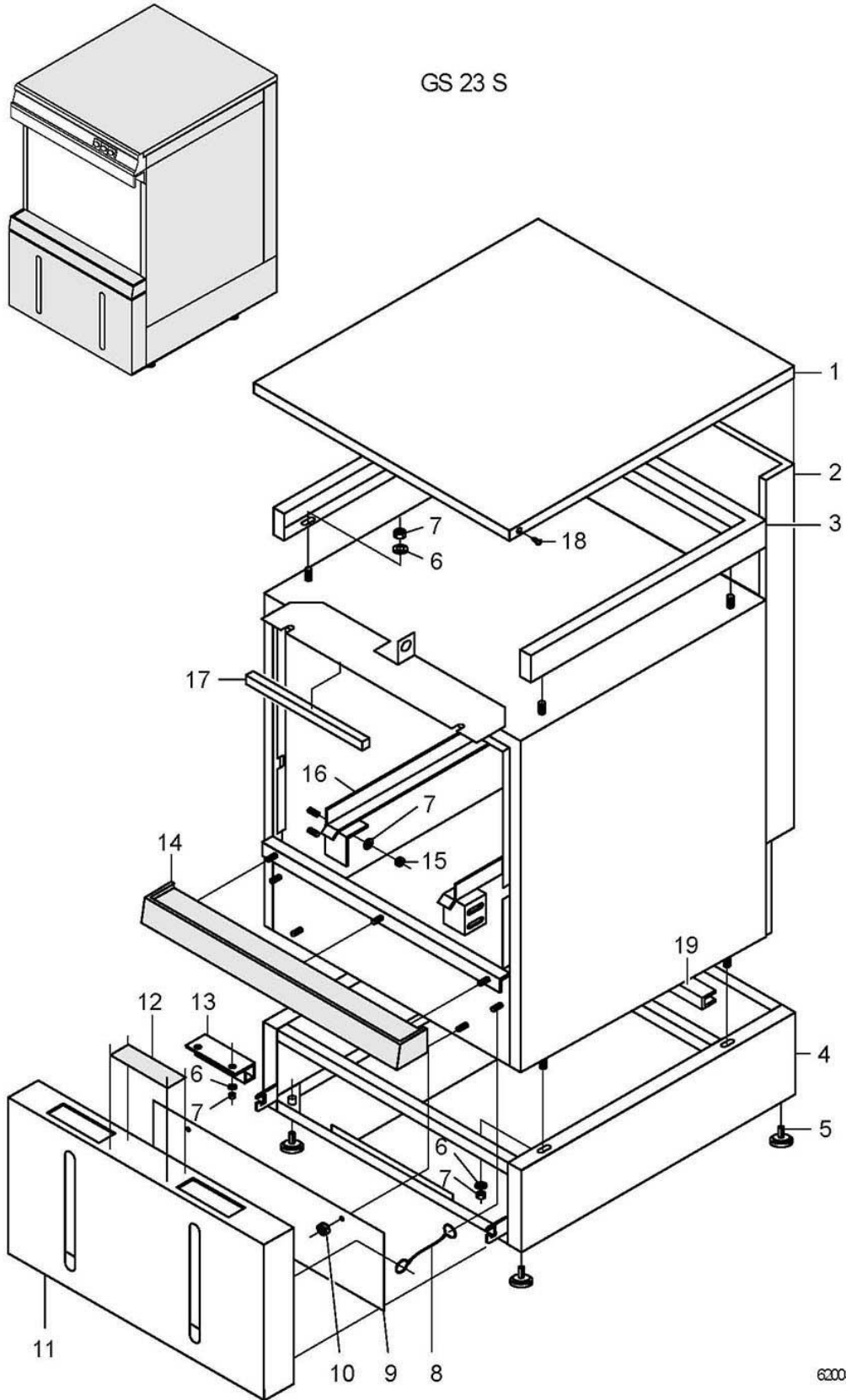
62003238-00

GS 23S

Chassis, container and panelling to machine no.: 5775

Item.	Designation	Parts no.:	Pc.	Notes
1	Cover plate	62002025		
2	Back panelling, complete	62002014		
3	Top frame	62002015		
4	Base frame	62002016		
5	Adjustable foot; M8 X 28, SW24	62002442	4	
6	Bottom cover; 2,0 X 400 X 474	55 17 010		
7	Washer; D5,3 X D10 X 1,0	22 01 300		
8	Hexagonal nut; M5 SELBSTSICHERND	21 05 302		
9	Assembly plate	62002017		
10	Countersunk screw; M4 X 8	20 10 309		
11	Front panel locking plate 23s	62002018	2	
12	Door bearing bolt; M8 X 28	62001729	2	
13	Washer; D6,4 X D12,5 X 1,6	22 01 302		
14	Hexagonal nut; M6	21 01 304		
15	Front panel	62002019		
16	Information sign 'filling'; 0,2 X 35 X 124	62001382		
17	Centering piece	62002021		
18	Centering piece; 1,0 X 29,5 X 170	62002022		
19	Washer; D4,3 X D8 X 0,5	22 02 302		
20	Hexagonal nut; M4	21 01 302		
21	Magnet holder	62002020		incl. magnet
22	Door handle/plate for gutter	62001617		to machine no.: 6469 Plastic
22	Stainless steel trough; 0,8 X 125 X 563	62002443		From machine no.: 6470 Stainless steel
23	Cap nut; M5	21 10 303		
24	Rack rail right, cpl.	62000300		
24	Rack rail left, cpl.	62000301		
25	Permanent magnet lock; 11 X 14 X 110	28 05 047		
26	Countersunk screw; M4 X 12	20 12 315		

GS 23 S

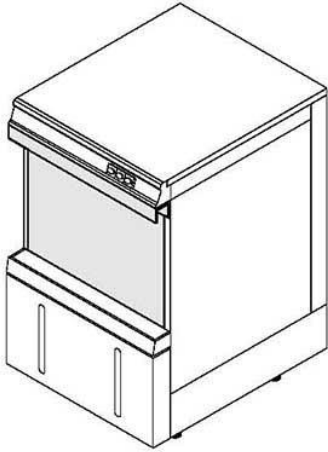


62003239-00

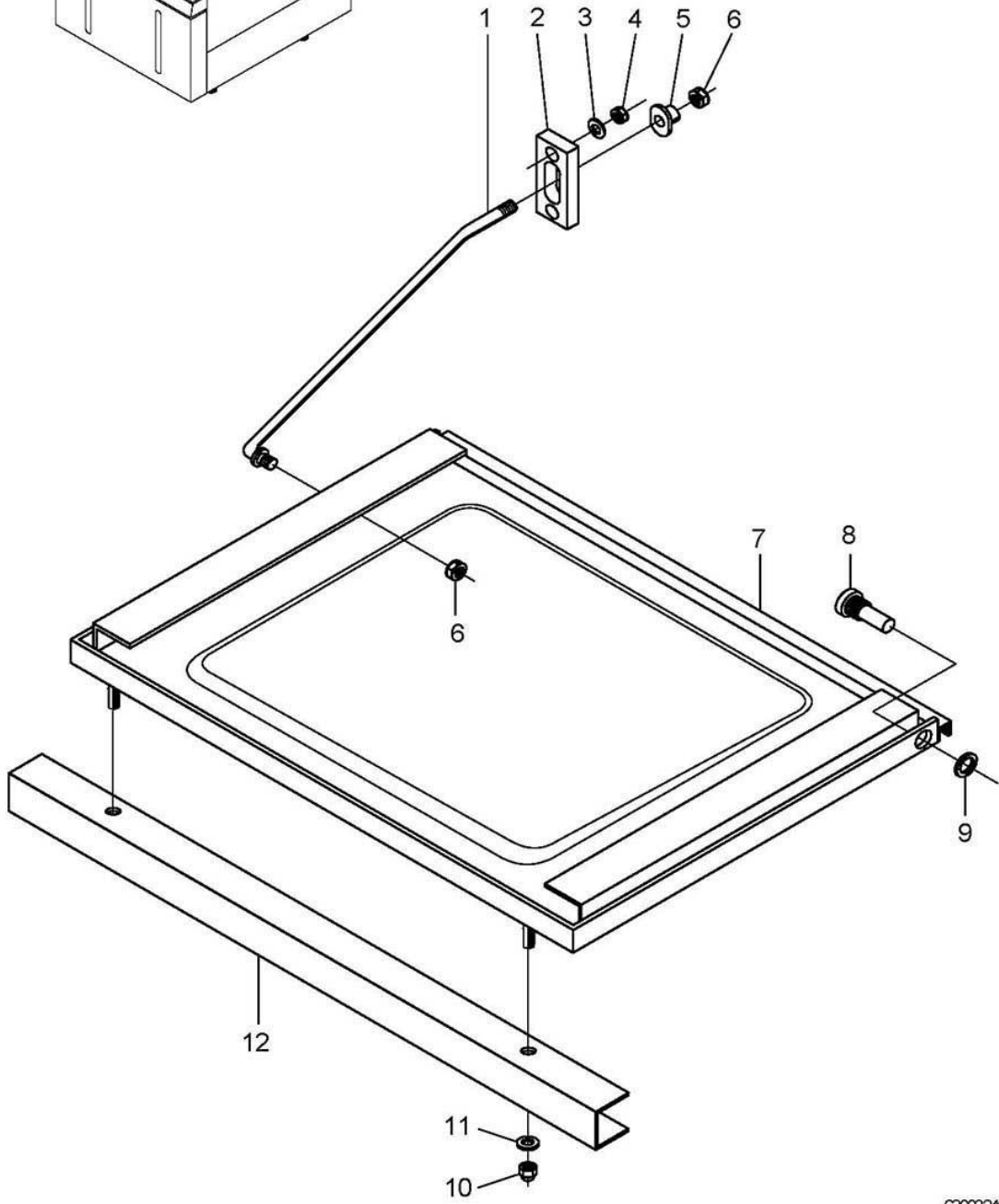
GS 23S

Chassis, container and panelling From machine no.: 5776

Item.	Designation	Parts no.:	Pc.	Notes
1	Cover plate	62002025		
2	Back panelling, complete	62002014		
3	Top frame	62002015		
4	Base frame	62002438		
5	Adjustable foot; M8 X 28, SW24	62002442	4	
6	Washer; D5,3 X D10 X 1,0	22 01 300		
7	Hexagonal nut; M5 SELBSTSICHERND	21 05 302		
8	Stabilizer II; D1,0 X 65 +5	28 06 008	2	
9	Safety cover; 2,0 X 185 X 428	62001761		adapt
10	Hexagonal nut; M4 SELBSTSICHERND	21 05 300		
11	Panel front	62002436		
12	Information sign 'filling'; 0,2 X 35 X 124	62001382		
13	Magnet holder	62002020		incl. magnet
14	Door handle/plate for gutter	62001617		to machine no.: 6469 Plastic
14	Stainless steel trough; 0,8 X 125 X 563	62002443		From machine no.: 6470 Stainless steel
15	Cap nut; M5	21 10 303		
16	Rack rail right, cpl.	62000300		
16	Rack rail left, cpl.	62000301		
17	Permanent magnet lock; 11 X 14 X 110	28 05 047		
18	Countersunk screw; M4 X 12	20 12 315		
19	Edge protection; 5,5 X 8,0 X 700	60001190	2	



GS 23 S



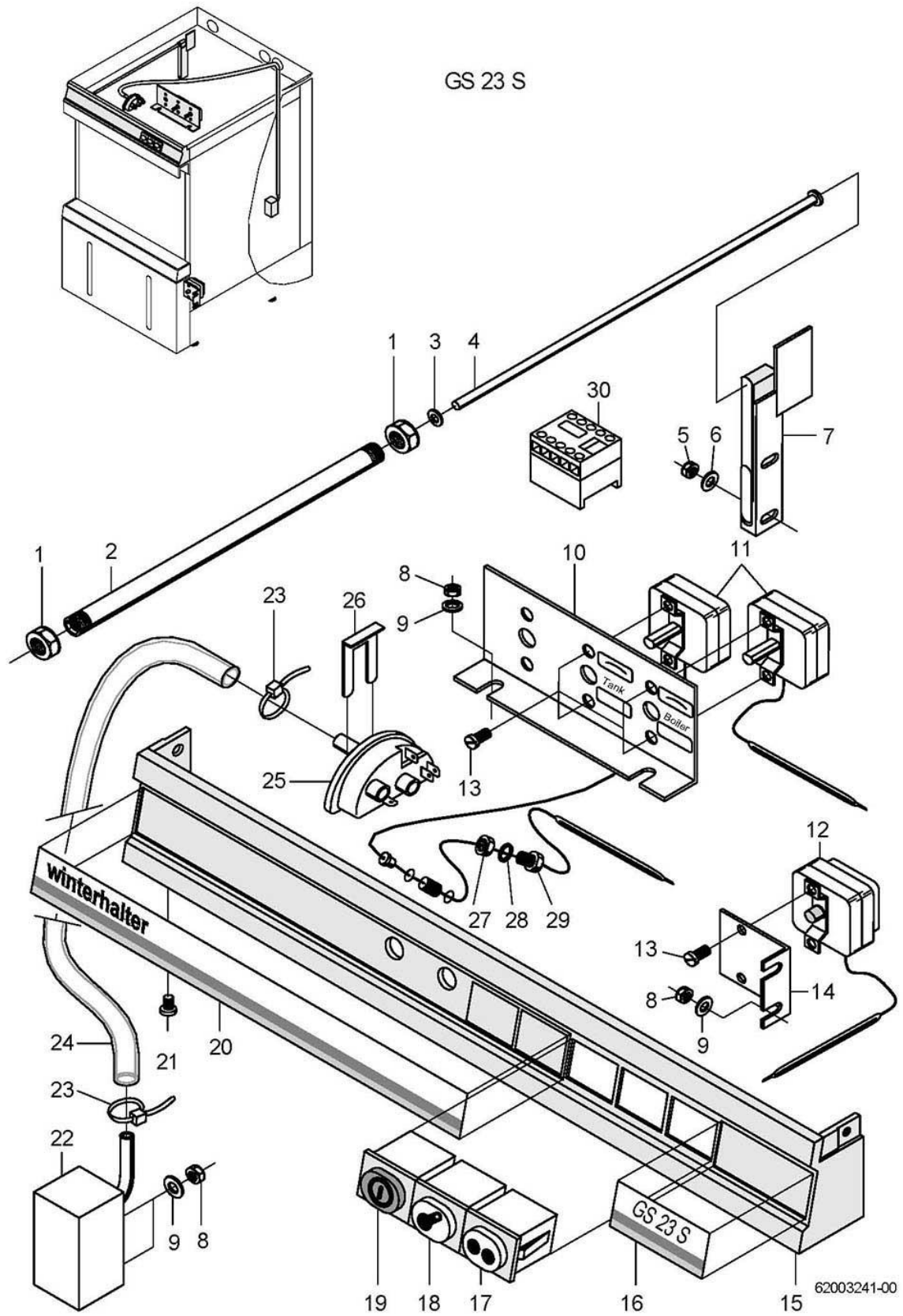
62003240-00

GS 23S

Door

Item.	Designation	Parts no.:	Pc.	Notes
1	Door rod left; M5 X 14; 170 LG	55 15 089		
1	Door rod right; M5 X 14; 170 LG	55 15 090		
2	Sliding bush; 6 X 14 X 48	35 01 164	2	
3	Washer; D4,3 X D8 X 0,5	22 02 302		
4	Hexagonal nut; M4	21 01 302		
5	Welding nut; M5 C	21 06 329		
6	Hexagonal nut; M5 SELBSTSICHERND	21 05 302		
7	Door cpl. GS 23S	62002013		
8	Cylinder head screw, M8 X 40	20 19 302		
9	Gasket; M8	22 08 505		
10	Cap nut; M5	21 10 303		
11	Washer; D5,3 X D10 X 1,0	22 01 300		
12	Door handle; 1,5 X 102 X 457	62000288		

GS 23 S

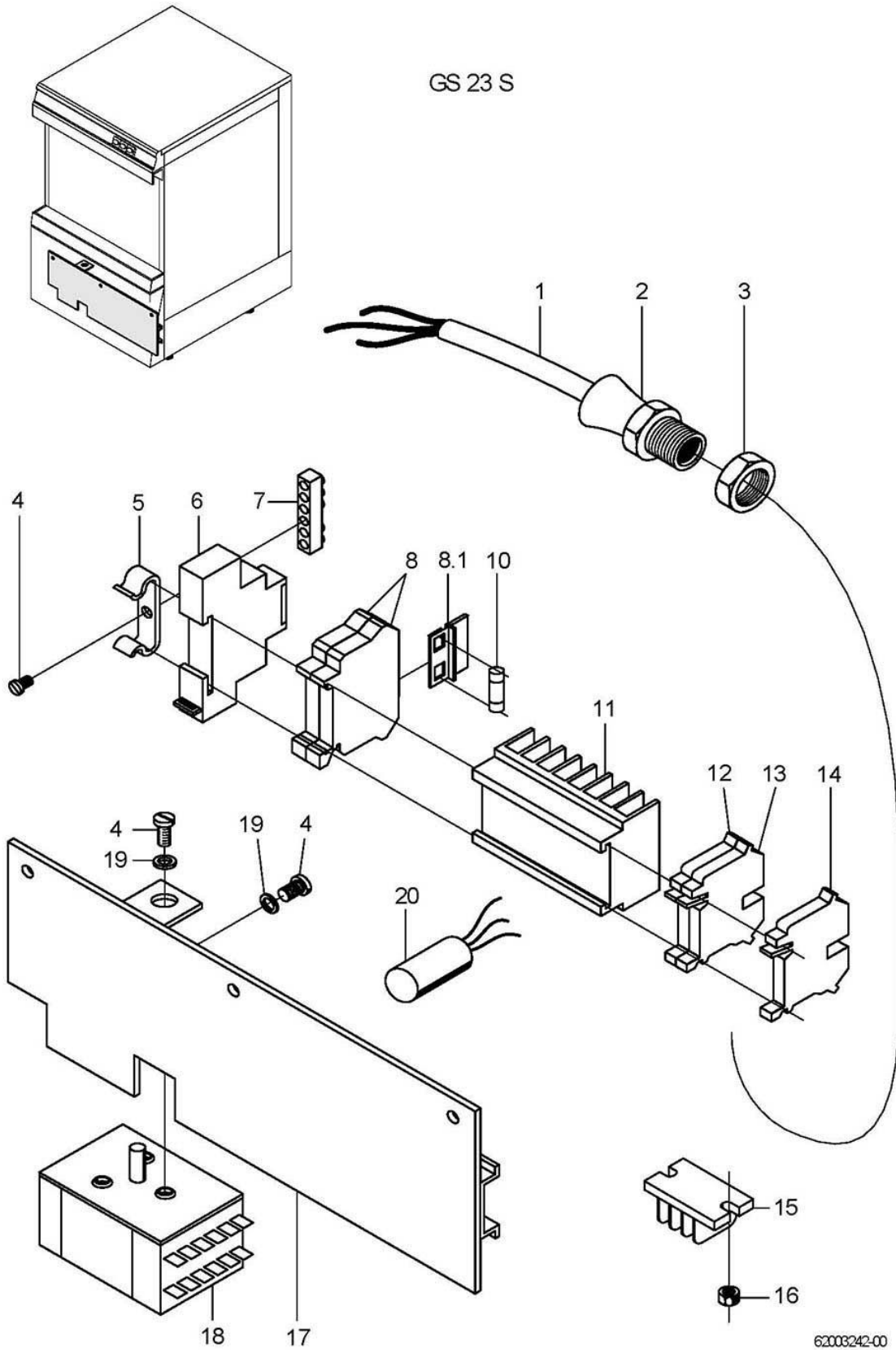


GS 23S

Electrical parts I

Item.	Designation	Parts no.:	Pc.	Notes
1	Hexagonal nut; M6	21 02 304		
2	Guide pipe; D6 X 1,2 X 436	62000250		
3	Washer; D3,2 X D6 X 0,5	22 02 201		
4	Switching rod; D3 X 444	28 15 030		
5	Hexagonal nut; M4	21 01 302		
6	Washer; D4,3 X D8 X 0,5	22 02 302		
7	Limit switch cpl.	62000224		
8	Hexagonal nut; M5	21 01 303		
9	Washer; D5,3 X D10 X 1,0	22 01 300		
10	Thermostat support; 1,5 X 60 X 215	62002023		to machine no.: 5775
11	Thermostat; 30-93 GRAD C "AUS"	31 25 035		boiler; From machine no.: 5776
11	Thermostat; 30-93 GRAD C "AUS"	31 25 033		Tank; From machine no.: 5776
11	Thermostat; 1750 LG	31 25 010		boiler; to machine no.: 5775
11	Thermostat; 1750 LG; 220V	31 25 013		Tank; to machine no.: 5775
12	Thermostat	31 25 032		to machine no.: 5775
12	Safety thermostat; 140 GRAD C -12K "AUS"	31 25 034		From machine no.: 5776
12	Safety thermostat; 98+/-4 GRAD AUS	31 25 022		up to mach. no. 5231
13	Countersunk screw; M4 X 8	20 10 309		
14	Thermostat support; 1,5 X 45 X 52	62002491		From machine no.: 5776
15	Screen	55 19 101		order pos. 16 separately
16	Strip label GS 23S; 0,4 X 25 X 76,5	62001776		
17	Pressure key "Programme II"; 250V; AC; 1-POL; IP54	31 24 130		
18	Lamp with extinction resistor; 230V; IP54	31 08 116		
19	Pressure switch "ON/OFF" - "H"; 250V; AC; 2-POL; IP54	31 24 185		
20	Plate "winterhalter"; 0,4 X 25 X 274,5	28 03 266		
21	Countersunk screw; M4 X 8	20 10 309		
22	Air chamber	62002024		to machine no.: 5775
22	Gasket; D21 X D28 X 2,0	27 09 011		to machine no.: 5775
22	Hexagonal nut; G 1/2" X 8,0; SW27	30 09 201		to machine no.: 5775
22	Air chamber	55 04 035		From machine no.: 5776
23	Cable tie; 100 X 2,5	31 20 175		
24	Hose; DN5 X 1,5	40 01 024		1000 mm; "By-the-metre" goods
25	Level control; 250V/50-60HZ	31 26 009		
26	Retaining spring for leveller	31 26 001		
27	Hexagonal nut; M14 X 1,0 X 5,0	31 25 002		
28	Gasket; D14,2 X D20 X 2,0	27 09 036		
29	Gland for thermostat; M14 X 1,0 X 15; SW19	31 25 001		
30	Mini contactor; 220V/50-60HZ	31 04 098		From machine no.: 6529

GS 23 S



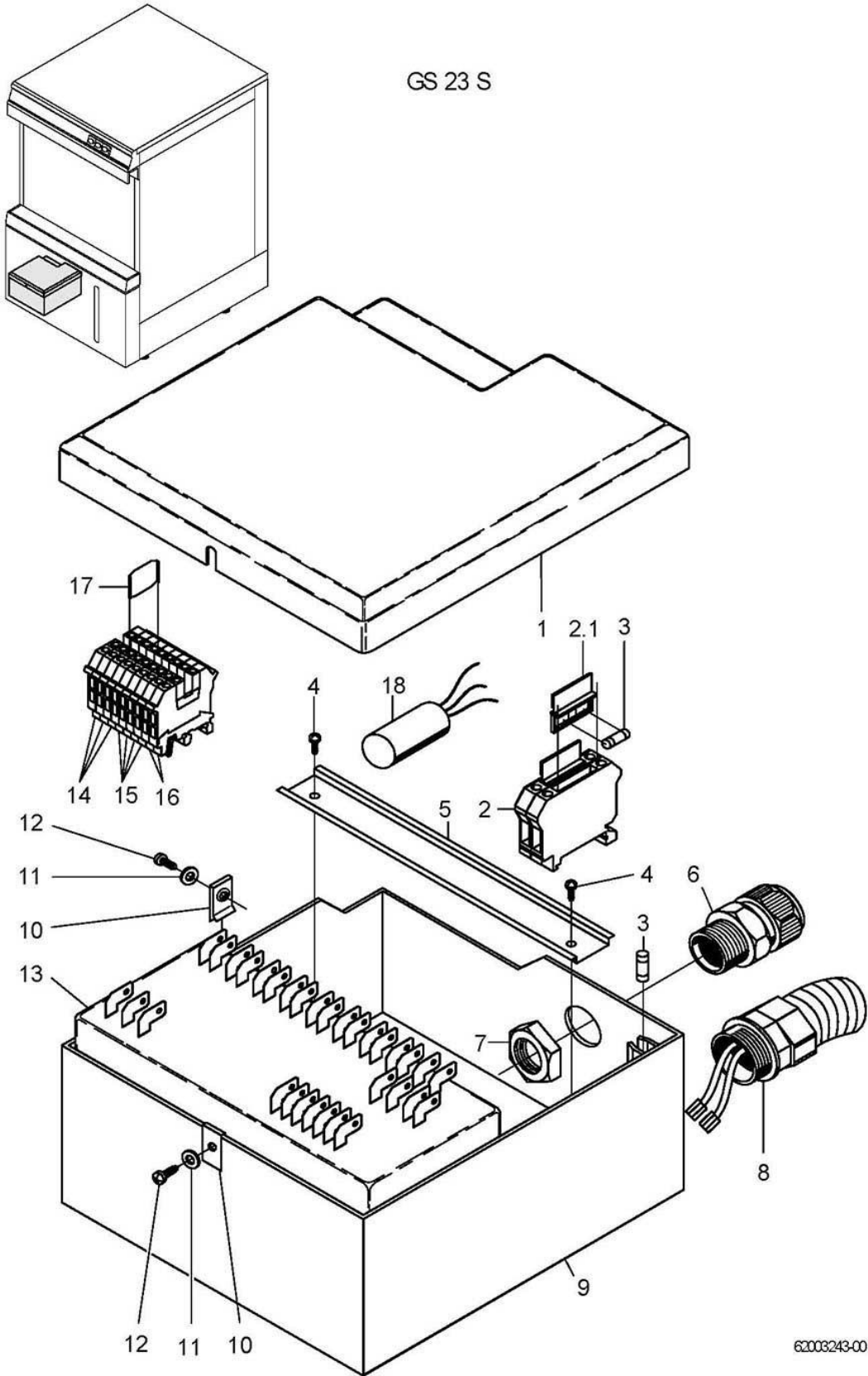
62003242-00

GS 23S

Electrical parts II to machine no.: 5775

Item.	Designation	Parts no.:	Pc.	Notes
1	Supply cable, 3-wire; 3 X 2,5QMM; 3000 LG	31 23 125		
2	Cable gland; PG13,5; 6-12 MM; IP68	31 10 040		
3	Hexagonal nut; PG13,5	31 10 041		
4	Raised head screw, M4 X 8	20 10 310		
5	Catch spring; D3,5	55 19 030		
6	Pulsing relay; 220-240V; 1-10SEC	31 04 117		
7	Earth terminal bar	31 09 094		
8	Universal fuse clip	31 09 063	2	incl. item 8.1
8.1	Securing plug	31 09 072		
10	Fine fuse, medium time lag; 250V; 6,3A; 5 X 20	31 11 043		
10	Fine fuse, medium time lag; 250V; 0,16A	31 11 044		
11	Clamping terminal; 1-FACH	31 09 025		
12	Universal terminal blue	31 09 050		
13	Universal terminal grey	31 09 049		
14	Protective conductor terminal USKLG 5	31 09 064		
15	Distribution bar; 3-POLIG	31 09 011		
16	Hexagon screw, M8 X 16; A70	20 01 302		
17	Assembly plate	62002017		
18	Programme switch; 230V/50HZ	31 05 100		
19	Washer; D4,3 X D8 X 0,5	22 02 302		
20	Radio interference suppression capacitor; 0,1 + 2 X 0,01 MIKRO F	31 13 071		

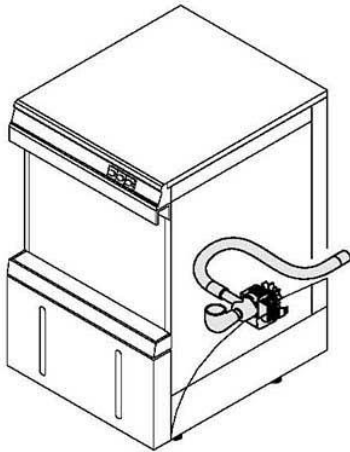
GS 23 S



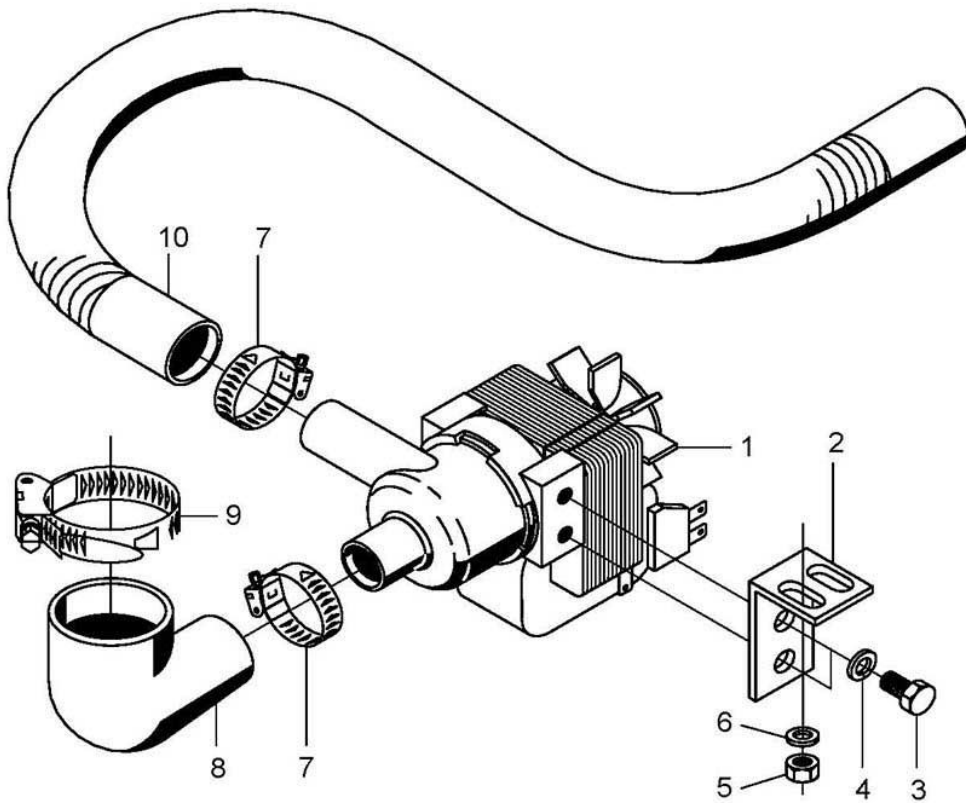
62003243-00

GS 23S**Electrical parts II From machine no.: 5776**

Item.	Designation	Parts no.:	Pc.	Notes
1	Electric box cover; 22 X 172,5 X 194,5	62001792		
2	Universal fuse clip	31 09 063	2	incl. item 2.1
2.1	Securing plug	31 09 072		
3	Fine fuse, medium time lag; 250V; 6,3A; 5 X 20	31 11 043	2	
4	PT screw; KB 50 X 10	20 17 304		
5	Snap-on rail; 7,5 X 35 X 162	62001772		
6	Cable gland; PG16; 10-14 MM; IP68	31 10 049		
7	Sleeve; 9 X D20 X D36	31 10 100		
8	Connecting nipple; PG21	31 10 086		
9	Relay box bottom part; 190 X 168 X 70	62001791		
10	Sheet metal nut; B 3,9	21 17 300		
11	Washer; D4,3 X D12 X 1,0	22 05 300		
12	Sheet metal screw; ST 3,5 X 13	20 20 304		
13	Programme switch EPS1.1; 230V/50-60HZ	31 05 131		
13	Programme switch EPS1.1 V2.0; 200V/240V 50-60HZ	31 05 132		
14	Double terminal, UK, 5-Twin	31 09 115		
15	Twin-clamp insulator blue	31 09 164		
16	Double terminal, UK, 5-Twin-PE	31 09 165		
17	Isolating disk	31 09 066		
18	Radio interference suppression capacitor; 0,1 + 2 X 0,01 MIKRO F	31 13 071		



GS 23 S



62003244-00

GS 23S

Drain pump (optional)

Item.	Designation	Parts no.:	Pc.	Notes
1	Drain pump; 220-240V/50HZ	31 02 010		
2	Bracket; 1,5 X 40 X 97	62002649		
3	Hexagon screw, M6 X 16; A70	20 01 306		
4	Spring washer; B6	23 03 300		
5	Hexagonal nut; M5 SELBSTSICHERND	21 05 302		
6	Washer; D5,3 X D10 X 1,0	22 01 300		
7	Hose clamp; D24-36 X 12	28 02 111		
8	Reducing elbow; DN24 X DN36	80002101		
9	Hose clamp; D32-52 X 12	28 02 110		
10	Drain hose; 1500 LG	40 01 039		
o.P.	Set drain pump	55 28 202		